

A FULL LINE OF VEHICLES DESIGNED  
TO INSPIRE AND EXHILARATE

کیان باترک



kia.com

2016  
SORENTO



facebook.com/kiasorento



twitter.com/kia



youtube.com/kia

All information contained herein was based upon the latest available information at the time of printing. Descriptions are believed to be correct, and Kia Motors America makes every effort to ensure accuracy; however, accuracy cannot be guaranteed. From time to time, Kia Motors America may need to update or make changes to the vehicle features and other vehicle information reported in this brochure. Some vehicles shown may include optional equipment. All video and camera screens shown in brochure are simulated. Kia Motors America, by the publication and dissemination of this material, does not create any warranties, either express or implied, to any Kia products. See your Kia retailer or [kia.com](http://kia.com) for further details concerning Kia's available limited warranties. ©2015 Kia Motors America, Inc. Reproduction of the contents of this material without the expressed written approval of Kia Motors America, Inc., is prohibited. R1

KIA MOTORS AMERICA, INC. P.O. BOX 52410 IRVINE, CA 92619-2410 1-800-333-4KIA

Part #: UK160 PM001



# Taking style and performance to a higher level

Combining bold exterior styling and impressive all-around performance, the all-new 2016 Kia Sorento is ready for everything, whether you're out for a night on the town or a weekend getaway. Its premium interior and available seating for seven\* allow you to travel in exceptional comfort. Plus, an available 290-hp 3.3L GDI V6\* engine delivers exhilarating performance. A long list of technologically advanced features, including available systems like Advanced Smart Cruise Control<sup>1</sup>\* and Blind-Spot Detection with Lane-Change Assist,<sup>1</sup>\* inspire confidence and enhance everyday convenience. Reflecting a proven commitment to America, Sorento is assembled in Kia's manufacturing plant in West Point, Georgia,<sup>†</sup> and like all Kia models, comes with an industry-leading, 10-year/100,000-mile warranty program<sup>2</sup> — a testament to its outstanding quality and reliability.



<sup>†</sup>The Sorento and Optima GDI (EX, SX & Limited and certain LX trims only) are assembled in the United States from U.S. and globally-sourced parts.  
<sup>1, 2</sup> \* See Features and Specifications pages for availability and endnotes. Not all optional features are available on all trims.  
Cover: SX LIMITED AWD WITH TECHNOLOGY PACKAGE SHOWN. This page: SX LIMITED SHOWN.





# Designed to make every drive thoroughly enjoyable

The new Sorento is designed to provide you with a truly luxurious driving experience, beginning with streaming audio when using a compatible *Bluetooth*® wireless technology-enabled<sup>3</sup> device. Available premium features include an Infinity®<sup>4</sup> surround-sound audio system with 10 speakers,\* a Supervision meter cluster\* with high-contrast graphics, and a voice-command navigation system<sup>5</sup>\* that delivers continuously updated highway conditions from SiriusXM Traffic.<sup>6</sup>\* Plus, the interior’s soft-touch surfaces reflect refined and contemporary styling.

**1. VENTILATED FRONT SEATS\*** Stay cool on hot summer afternoons, thanks to available ventilated driver and front-passenger seats that circulate cool air through perforations in the seat leather. **2. HEATED SEATS\*** For comfortable driving in cold weather, heated front- and second-row outer seats are available. **3. HEATED STEERING WHEEL** On the SX Limited, this luxurious feature is especially nice on cold winter mornings. **4. PUSH-BUTTON START\*** Start or stop the engine at the push of a button with the available Smart Key remote, even with the key fob in your pocket or purse. **5. MEMORY SETTINGS\*** Available memory with presets allows two drivers to lock in their personal settings for the driver’s seat and outside rearview mirrors. **6. 14-WAY POWER-ADJUSTABLE DRIVER’S SEAT\*** This available feature maximizes comfort and personalizes ergonomics with adjustable lumbar support and seat-cushion extension. **7. SECOND-ROW SUNSHADES\*** Rear-seat passengers can enjoy a comfortable ride with side-window sunshades. **8. ELECTRONIC PARKING BRAKE\*** For convenient operation, the available parking brake is automatically released when you shift out of Park. **SIRIUSXM® SATELLITE RADIO<sup>6</sup>** Enjoy 150 channels of commercial-free music, plus sports, and news in your Kia during your 3-month SiriusXM All Access trial subscription, which also includes 160+ channels on your computer, smartphone, and tablet.

3, 4, 5, 6, \* See Features and Specifications pages for availability and endnotes. Not all optional features are available on all trims. SX LIMITED WITH TECHNOLOGY PACKAGE SHOWN.



## Intelligent

Sorento includes a variety of technologically advanced features that are dedicated to enhancing every aspect of your drive. Available features include the multifaceted UVO eServices<sup>5</sup> Infotainment System, Park Assist Sensor,<sup>1\*</sup> and HID headlights with Auto-Leveling,<sup>\*</sup> providing you with a superb combination of control and convenience.



## Innovative

Sorento is equipped with impressive systems that monitor your driving environment. Innovative available features include Advanced Smart Cruise Control,<sup>1\*</sup> Rear Cross-Traffic Alert,<sup>1\*</sup> and Blind-Spot Detection with Lane-Change Assist,<sup>1\*</sup> which utilizes a radar system to detect vehicles in the driver's blind spot and recognize those approaching from behind.



### 1. UVO — SHORT FOR “YOUR VOICE”

The available UVO eServices<sup>5</sup> Infotainment System uses advanced voice-recognition technology to let you conveniently manage your music and enjoy hands-free<sup>5</sup> use of your phone — with simple, intuitive verbal commands. It provides you with an easy way to connect to your vehicle by seamlessly integrating your compatible smartphone<sup>7</sup> with your Sorento. UVO eServices<sup>5\*</sup> can access Local Search powered by Google<sup>TM®</sup> when it is connected wirelessly to an Internet hotspot,<sup>5</sup> and it allows you to use a web-enabled computer to send locations that you find on Google Maps<sup>TM®</sup> mapping service to the navigation system for route guidance. It also lets you stream music, download apps from the App Download Center,<sup>5\*</sup> monitor your vehicle's driving habits, access 911 Connect<sup>9\*</sup> or Enhanced Roadside Assist,<sup>10\*</sup> and check maintenance requirements with Vehicle Diagnostics<sup>11\*</sup> on the large-capacitive touch screen.\* Additionally, there are no subscription fees<sup>5</sup> to enjoy all these benefits.



### 2. UVO eSERVICES APP<sup>5</sup>

An available free app allows you to integrate your compatible smartphone<sup>7</sup> with your vehicle — and make the most of UVO eServices.<sup>5\*</sup> This app can be downloaded at the App Store<sup>SM12</sup> and Google Play<sup>TM</sup> Store.<sup>8</sup>



### 3. REAR PARK ASSIST SENSOR<sup>1\*</sup>

When you're parking, an available sonar system concealed in the rear bumper gives the driver audible warnings if it detects certain objects close to your vehicle.



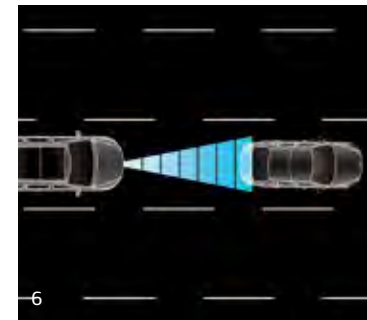
### 4. REAR-CAMERA DISPLAY<sup>1\*</sup>

To help you see things behind your vehicle that you might not see by looking over your shoulder, Sorento features an available Rear-Camera Display with a large and bright screen.



### 5. HID HEADLIGHTS WITH AUTO-LEVELING<sup>\*</sup>

Available High-Intensity Discharge (HID) headlights provide crisp, brilliant lighting. They are also auto-leveling, automatically maintaining the proper level of projection even when the road tilts up or down.



### 6. ADVANCED SMART CRUISE CONTROL<sup>1\*</sup>

Available Advanced Smart Cruise Control uses radar to maintain a predetermined distance from the vehicle directly ahead, automatically slowing or accelerating your Sorento when appropriate.



### 7. REAR CROSS-TRAFFIC ALERT<sup>1\*</sup>

Available Rear Cross-Traffic Alert warns the driver of cross-traffic while the vehicle is in reverse by activating audible and visual alerts to help reduce the likelihood of a collision.



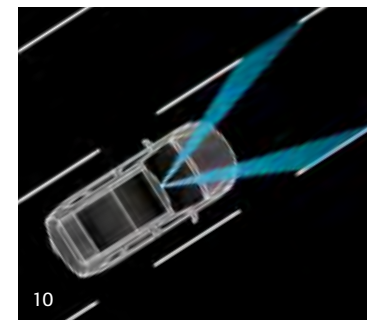
### 8. BLIND-SPOT DETECTION WITH LANE-CHANGE ASSIST<sup>1\*</sup>

An available radar system helps detect vehicles in the driver's blind spot and then provides alerts. Lane-Change Assist helps detect vehicles approaching from behind.



### 9. VOICE-COMMAND NAVIGATION<sup>\*</sup>

The convenient, available voice-command navigation system features a vivid 8-inch color screen and delivers continuously updated highway conditions from SiriusXM Traffic.<sup>6</sup>



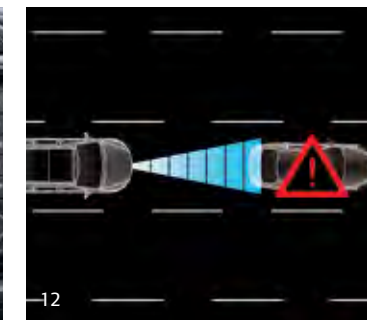
### 10. LANE DEPARTURE WARNING SYSTEM<sup>1\*</sup>

Available Lane Departure Warning System is designed to detect the vehicle moving out of its lane without the turn signal being used. When it does, the advanced system alerts the driver with a combination of audible and visual warnings.



### 11. SURROUND-VIEW MONITOR<sup>1\*</sup>

Available Surround-View Monitor utilizes four cameras at the front, rear, and sides to provide a view around the vehicle. This helps enhance driver visibility when maneuvering into parking spaces.



### 12. FORWARD COLLISION WARNING SYSTEM<sup>1\*</sup>

Available Forward Collision Warning System activates alerts when the vehicle detects objects immediately ahead that may cause a potential impact, encouraging the driver to decelerate.



### 13. SMART WELCOME<sup>\*</sup>

The available Smart Welcome system is activated by the available Smart Key remote. When you get close to your Sorento, interior and door-handle lights go on and the power-folding mirrors unfold.



# Spacious and adaptable

Sorento’s spacious interior is complemented by a variety of seating configurations. Split-folding second-row seats let you carry passengers, cargo, or both. Available third-row seats\* allow Sorento to accommodate up to seven passengers, or fold flat for increased cargo area. Thoughtful features such as available sound-insulating laminated glass\* help provide an exceptionally quiet ride.



**PANORAMIC SUNROOF W/POWER SUNSHADE\***  
Enjoy a feeling of spaciousness and fill the cabin with fresh air with the available panoramic sunroof. It includes a power sunshade that makes its operation quick and convenient.

**NAPPA LEATHER SEAT TRIM\***  
Available premium Nappa leather seat trim on all three rows of seats provides a soft, luxurious feel for exceptional comfort and sophisticated styling.

**ADJUSTABLE FRONT-SEAT HEADRESTS\***  
Travel in comfort with the available front-seat headrests that adjust forward/backward in addition to up/down.

**SPLIT-FOLDING SECOND- AND THIRD-ROW SEATS\***  
The second-row seats’ 40/20/40 and third-row seats’ 50/50 split-folding design lets you carry longer items as well as passengers.

**RECLINING/SLIDING SECOND-ROW SEATS\***  
Reclining second-row seats with a fold-down center armrest allow passengers to sit back and relax. On models with available third-row seats, the second-row seats also slide forward and backward, giving you easy access to the third row.

**DUAL-ZONE AUTOMATIC TEMPERATURE CONTROL\***  
To create personalized comfort zones, the available dual-zone automatic temperature control allows the driver and front passenger to adjust individual temperature settings. Second-row passengers enjoy blended temperature from the rear vents.

**CLUSTER IONIZER\***  
The available dual-zone air-conditioning system includes a cluster ionizer. It works silently and efficiently to help purify air in the cabin.

**SOUND-INSULATING LAMINATED GLASS\***  
For a quiet and luxurious drive, the windshield and front-door windows feature available laminated sound-insulating glass. It incorporates two distinct layers of thin film on each side of the windows’ insulating center layer.



FOLD-DOWN 3RD-ROW SEATS<sup>13\*</sup>



SPLIT-FOLDING 2ND- & 3RD-ROW SEATS<sup>13\*</sup>



RECLINING/SLIDING 2ND-ROW SEATS<sup>14\*</sup>



DUAL-ZONE AUTOMATIC TEMPERATURE CONTROL\*



**1. SMART WELCOME\*** An available Smart-Power Liftgate\* opens automatically if you simply stand behind it for three seconds with the available Smart Key\* in your possession. Plus, it automatically retracts if it meets resistance. **2. AUTOMATIC LIFTGATE CLOSE\*** For everyday convenience, you may automatically close the available Smart-Power Liftgate\* with the touch of a button. **3. 110-VOLT POWER INVERTER\*** A handy available 110-volt power inverter lets you plug in your electronics from a laptop computer to a camcorder right into an electrical power outlet. **4. LARGE CENTER CONSOLE STORAGE** It features a padded flip-up armrest. Inside, it has a large sliding tray and storage compartment, along with a rapid-charge USB outlet.



**5. THIRD-ROW AIR-CONDITIONING CONTROL\*** Available controls let third-row passengers adjust the airflow or turn it on/off. **6. CONCEALED STORAGE\*** Store items out of sight with a spacious compartment hidden beneath the cargo floor. You may also keep loose items neatly organized with the available tray. **REAR-SEAT POWER OUTLETS** Rear-seat passengers have ready access to 115-volt, USB, and 12-volt power outlets located on the back of the center console. **STAIN-RESISTANT SEATS** YES Essentials®<sup>15</sup> cloth seating features repel-and-release technology for stain resistance and fast drying, so even messy spills clean up easily. Plus, advanced fibers help eliminate lingering smells that moisture can leave behind.

<sup>13</sup>, <sup>15</sup>, \* See Features and Specifications pages for availability and endnotes. Not all optional features are available on all trims. SX LIMITED SHOWN.



## More of a good thing

Sorento's spacious cargo area<sup>13</sup> provides outstanding versatility, while roomy, easy-to-reach storage compartments help you keep everything organized and securely in its place. In addition, an available Smart-Power Liftgate\* with programmable heights makes loading and unloading cargo exceptionally convenient.



# The perfect getaway vehicle

Sorento's advanced all-wheel-drive (AWD) system\* continuously monitors driving conditions and anticipates traction requirements, allowing you to explore a variety of roads with complete confidence. AWD is complemented by a six-speed Sportmatic® transmission that operates with seamless efficiency. The 185-hp 2.4L Gasoline Direct Injection (GDI) engine and available 240-hp turbocharged\* 2.0L GDI or 290-hp 3.3L GDI V6\* all deliver outstanding performance. Sorento also provides a remarkably smooth, quiet ride and precise handling, thanks to its unibody design and independent suspension.



## ALL-WHEEL DRIVE\*

Sorento has front-wheel or available all-wheel drive. The AWD system uses electronic sensors to monitor road conditions, and then, for enhanced traction and control, helps to distribute power to the appropriate wheels.

## TORQUE VECTORING CORNER CONTROL (TVCC)\*

All-wheel-drive models feature TVCC, which applies braking force to the inside rear-corner wheel for increased cornering stability and control.

## FOUR-WHEEL-DRIVE LOCK MODE\*

If you decide that road conditions merit full-time four-wheel drive, available AWD models allow you to select four-wheel-drive lock mode with the touch of a button.

## OUTSTANDING TOWING CAPACITY<sup>16</sup>\*

The available 3.3-liter Gasoline Direct Injection (GDI) V6\* engine produces 252 lb.-ft. of torque, giving Sorento AWD a strong towing capacity of 5,000 lb.

## EXCEPTIONAL PERFORMANCE

The available 240-hp turbocharged\* 2.0L GDI engine and the 290-hp 3.3L GDI V6\* deliver inspiring performance, with an ideal balance of outstanding acceleration and efficiency.

## SPORTMATIC® TRANSMISSION

A six-speed automatic transmission provides smooth, seamless shifting. Its Sportmatic® design allows you to choose automatic mode or, for a sportier driving experience, clutch-free manual shifting.

## DRIVE-MODE SELECT SYSTEM

To suit your style of driving, available Drive Mode selectable electronic steering and powertrain settings allow you to choose between normal, ECO, or comfort.

## SMOOTH, PRECISE HANDLING

A four-wheel independent suspension features High-Performance Dampers, front MacPherson struts, and a rear multi-link design for smooth performance and precise handling.

16, \* See Features and Specifications pages for availability and endnote. Not all optional features are available on all trims. SX LIMITED TURBO AWD SHOWN.



# Advanced safety systems — because life is full of curves

Sorento features advanced safety systems designed to help give you peace of mind every time you drive. Each one is engineered to help you maintain control, even in harsh road conditions and in some emergency situations.<sup>†</sup> These safety systems are designed to function automatically, leaving you free to focus on safe driving.

## ELECTRONIC STABILITY CONTROL (ESC)

ESC provides improved directional stability, which helps you maintain better control in difficult driving situations. During emergency maneuvers, it can control the engine and brakes to help keep your Sorento on course.

## TRACTION CONTROL SYSTEM (TCS)

When TCS senses wheelspin during acceleration, it uses a combination of engine power and brake force to help transfer power to the wheels that have the most traction.

## ELECTRONIC BRAKE-FORCE DISTRIBUTION (EBD)

To help maintain more consistent braking as vehicle loads and weight distribution change, EBD automatically adjusts the front-to-rear balance of brake pressure.

## BRAKE ASSIST SYSTEM (BAS)

If BAS detects emergency braking, based on how quickly you step on the brake pedal, it instantly applies full braking force, which helps shorten your overall stopping distance.

## HILL-START ASSIST CONTROL (HAC)

To help keep your Sorento from rolling backward when starting off on a steep hill, the HAC system automatically holds the brake pressure for two seconds after you take your foot off the brake pedal.



<sup>†</sup>No system, no matter how advanced, can compensate for all driver errors, driving conditions, accidents, and/or injury. Always drive responsibly. SX LIMITED SHOWN.





#### ISO-STRUCTURE™

Sorento features a uniquely engineered body that combines various high-tensile strength steel alloys. This body structure helps provide crash protection, better driving dynamics, and is the foundation for a quieter ride.

#### FRONT & REAR CRUMPLE ZONES

Both front and rear crumple zones are specially engineered to help absorb and dissipate impact energy, helping to preserve the basic structural integrity of the passenger compartment in certain collisions.

#### AIRBAG & SEAT-BELT SENSORS

This advanced system monitors the severity of certain impacts, the presence of a front passenger and seat belt use, and then controls airbag inflation accordingly,<sup>17</sup> helping to ensure your peace of mind.

#### ROLLOVER SENSOR

If the airbag sensors detect an impending rollover, this system can deploy the side airbags, side curtain airbags, and seat-belt pretensioners.

#### FRONT SEAT-BELT PRETENSIONERS

Sorento's advanced safety features include pretensioners that have been designed to tighten the front seat belts in the event of certain collisions. This helps reduce the likelihood of injuries in some situations.

#### SIDE-IMPACT DOOR BEAMS

All doors are reinforced with steel beams to help absorb impact energy and deflect side-impact force. In addition, the A and B pillars are also reinforced, further helping to strengthen the body of the vehicle.

#### FRONT & REAR 3-POINT SEAT BELTS

Three-point seat belts are standard for all seating positions, so that each person is protected with an over-the-lap and shoulder seat belt.

#### LATCH SYSTEM

Sorento features easy-to-use Lower Anchors and Tethers for Children (LATCH) system. It is engineered to let you securely install a compatible child seat at either end of the second-row seat.

No system, no matter how advanced, can compensate for all driver errors, driving conditions, accidents, and/or injury. Always drive responsibly.  
Inflated airbags are shown for illustration only.  
<sup>17</sup> See Specifications page for endnote. SX LIMITED SHOWN.



کیان باتری

## Designed to help protect driver and passengers

Sorento is equipped with passive safety systems designed to help minimize injury when certain traffic accidents are unavoidable. An advanced airbag system helps protect driver and passengers with dual front, front seat-mounted side, and full-length side curtain airbags.<sup>17</sup>



# Delivering on a promise

Kia is committed to producing world-class vehicles to suit most every driving need. This commitment has led to the development of stylish vehicles with an extraordinary combination of precision engineering, outstanding performance, innovative features, and advanced safety systems. Kia’s dedication to quality and value has been widely recognized — one reason why Kia has been named as a top 100 brand in Interbrand’s Best Global Brands 2014 report.<sup>18</sup> In addition, Kelley Blue Book’s KBB.com has announced the recipients of its Brand Image Awards, naming Kia as the 2014 Best Value Brand. This honor recognizes our success at producing fuel-efficient and affordable vehicles.<sup>19</sup>



**TAKING ON THE COMPETITION**  
The Kia Racing team is dedicated to competing against world-class competition — and winning. That dedication is part of Kia’s belief that the knowledge gained in competition can be applied to the entire Kia lineup to provide you with vehicles that perform beyond your expectations. The Kia Racing team includes championship-winning drivers with proven track records, and with 11 podium finishes — including five victories — in the 2014 season, you can look for Kia in the winner’s circle at racetracks across America in the months ahead.



**COMMITMENT TO AMERICA**  
Kia Motors has invested over \$1.1 billion in its manufacturing plant in West Point, Georgia. Utilizing the latest manufacturing processes and state-of-the-art robotics, the plant recently produced its one millionth vehicle after less than four years of operation. The Sorento crossover and certain Optima midsize sedans are currently being assembled at this plant.<sup>1</sup> Together with on-site and local suppliers, the Georgia facility is responsible for the creation of more than 14,000 jobs in West Point and the surrounding areas. It’s all part of Kia Motors’ commitment to America — a commitment that is sure to grow and strengthen in the years ahead.



OFFICIAL  
AUTOMOTIVE  
PARTNER  
OF THE NBA  
20



OFFICIAL  
AUTOMOTIVE  
PARTNER  
OF THE LPGA  
21

**INDUSTRY-LEADING WARRANTY PROGRAM<sup>2</sup>**  
Kia engineers are passionate about producing vehicles that are exceptionally well designed and reliable. Their dedication to quality and attention to detail give Kia the confidence to back every model with an industry-leading warranty program.<sup>2</sup>

- 10-year/100,000-mile limited powertrain warranty
- 5-year/60,000-mile limited basic warranty
- 5-year/100,000-mile limited anti-perforation warranty
- 5-year/60,000-mile 24-hour roadside assistance

**COMPELLING DESIGN**  
Kia vehicles have captured worldwide attention for their interior and exterior styling, which represents the collaborative work of designers who have created a look that makes every Kia recognizable at first sight. Today, the lineup consists of vehicles that fill owners, as well as Kia’s designers, with pride.



KIA GT4 STINGER CONCEPT VEHICLE SHOWN (not available for sale).

**B.R.A.K.E.S. PRO-ACTIVE DRIVING SCHOOL FOR TEENS**  
Kia understands that teaching teenagers safe driving skills can save lives. To accomplish this goal, Kia has formed a partnership with the B.R.A.K.E.S. (Be Responsible And Keep Everyone Safe) Pro-Active Driving School For Teens ([www.PutOnTheBrakes.org](http://www.PutOnTheBrakes.org)), with support including a fleet of 32 vehicles. B.R.A.K.E.S. provides teenagers 15-19 nationwide with no-cost, hands-on defensive training on a closed course in a controlled environment to respond to real-world driving scenarios.



**DONORSCHOOSE.ORG**  
Kia is committed to providing assistance to those in need. That’s why Kia became the first car company to partner with DonorsChoose.org, an online charity that allows organizations and individuals to donate to classrooms in need. Together with thousands of citizen philanthropists, Kia has raised more than \$5 million to fund more than 10,000 projects across all 50 US states, impacting more than 1.5 million high-need public-school students in just two years.



<sup>1</sup>The Sorento and Optima GDI (EX, SX & Limited and certain LX trims only) are assembled in the United States from U.S. and globally-sourced parts. 2, 18, 19, 20, 21 See Specifications page for endnotes.



# PACKAGES

## LX CONVENIENCE

1. 10-way power-adjustable driver's seat (includes lumbar control)
2. Heated front seats
3. Leather-trimmed steering wheel and shift knob
4. Auto-dimming rearview mirror
5. Rear Park Assist Sensor<sup>1</sup>
6. 3rd-row air-conditioning control (LX V6 only)



## EX PREMIUM

1. Smart-Power Liftgate
2. Auto up/down safety window (passenger/rear passenger)
3. Premium TFT Supervision meter cluster
4. 2nd-row shade curtains
5. Push-button start w/Smart Key
6. Pocket lighting (Smart Welcome)
7. Power-folding side mirrors
8. Blind-Spot Detection<sup>1</sup>
9. Rear Cross-Traffic Alert<sup>1</sup>
10. 110-volt power inverter



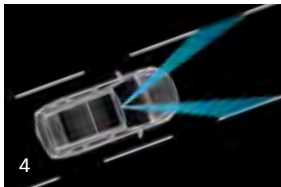
## EX TOURING (Requires Premium Package — delayed availability)

1. Panoramic sunroof
2. Voice-command navigation
3. Infinity® premium surround-sound audio w/10 speakers
4. Chrome-finish roof rails



## SX LIMITED TECHNOLOGY

1. Electronic parking brake
2. Forward Collision Warning System<sup>1</sup>
3. Surround-View Monitor<sup>1</sup>
4. Lane Departure Warning System<sup>1</sup>
5. Advanced Smart Cruise Control<sup>1</sup>
6. HID headlights w/Auto-Leveling



# COLORS

## EXTERIOR

SNOW WHITE PEARL (P)  
LX: BK/B  
EX: BK/B/G  
SX: BK/G  
SXL: MR/I/MT

SPARKLING SILVER (M)  
L: BK  
LX: BK  
EX: BK/G  
SX: BK/G

TITANIUM SILVER (M)  
L: BK  
LX: BK  
EX: BK/G  
SX: BK/G  
SXL: MR/I/MT

PLATINUM GRAPHITE (PM)  
LX: BK  
EX: BK/G  
SXL: MR/I/MT

EBONY BLACK  
L: BK  
LX: BK/B  
EX: BK/B/G  
SX: BK/G  
SXL: MR/I/MT

BLAZE BLUE (M)  
LX: BK  
EX: BK/G

REMINGTON RED (M)  
LX: BK/B  
EX: BK/B  
SX: BK/G

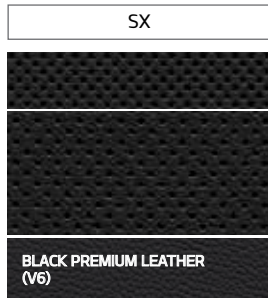
DARK CHERRY (M)  
LX: BK/B  
EX: BK/B/G  
SX: BK/G

POLISHED WALNUT (M)  
EX: BK/B

INTERIOR COMBINATIONS  
ARE INDICATED BY:  
  
BK = BLACK  
B = STONE BEIGE  
G = LIGHT OR DARK GRAY  
MT = METALLIC  
MR = MERLOT  
I = IVORY

(M) = METALLIC PAINT, (P) = PEARL PAINT, (PM) = PEARL METALLIC PAINT

## INTERIOR



ACTUAL EXTERIOR AND INTERIOR COLORS MAY VARY FROM PRINTED BROCHURE.

1, 4 See Specifications page for endnotes.



# FEATURES

## MECHANICAL & EXTERIOR

2.4L Gasoline Direct Injection 4-cylinder engine	●	●	—	—	—
2.0L Gasoline Direct Injection 4-cylinder Turbo engine	—	—	●	—	●
3.3L Gasoline Direct Injection V6 engine	—	○	○	●	○
6-speed automatic transmission w/Sportmatic®	●	●	●	●	●
AWD w/locking center differential & Torque Vectoring Corner Control (TVCC)	—	○	○	○	○
17" tires w/alloy wheels	●	●	—	—	—
18" tires w/alloy wheels	—	—	●	—	—
19" tires w/machined-finish alloy wheels	—	—	—	●	●
19" tires w/chrome-finish alloy wheels (V6 model only)	—	—	—	—	●
Panoramic sunroof w/power sunshade	—	—	○^	●	●
Power outside mirrors w/turn-signal indicators	●	●	—	—	—
Power-folding outside mirrors w/turn-signal indicators	—	—	○	●	●

## INTERIOR & CONVENIENCE

AM/FM/CD/MP3/SiriusXM® <sup>6</sup> audio system	●	●	●	●	●
Infinity® <sup>4</sup> premium surround-sound audio w/10 speakers & HD Radio™ Technology <sup>22</sup>	—	—	○^	●	●
UVO eServices <sup>5</sup> Infotainment System	—	●	●	—	—
UVO eServices <sup>5</sup> Infotainment System w/voice-command navigation & SiriusXM Traffic <sup>6</sup>	—	—	○^	●	●
Rear-Camera Display <sup>1</sup>	—	●	●	●	●
Surround-View Monitor <sup>1</sup>	—	—	—	—	○
Rear Park Assist Sensor <sup>1</sup>	—	○	●	●	●
Blind-Spot Detection w/Lane-Change Assist <sup>1</sup>	—	—	○	●	●
Rear Cross-Traffic Alert <sup>1</sup>	—	—	○	●	●
Lane Departure Warning System <sup>1</sup>	—	—	—	—	○
Cruise control	●	●	●	●	●
Advanced Smart Cruise Control <sup>1</sup>	—	—	—	—	○
Forward Collision Warning System <sup>1</sup>	—	—	—	—	○
Push-button start w/Smart Key	—	—	○	●	●
Rapid charge USB port	—	●	●	●	●
Bluetooth® wireless technology <sup>3</sup>	●	●	●	●	●

## SEATING & TRIM

Cloth seats w/YES Essentials® <sup>15</sup>	●	●	—	—	—
Leather seat trim	—	—	●	●	—
Premium Nappa leather seat trim	—	—	—	—	●
Heated front seats	—	○	●	●	●
2nd-row heated outer seats	—	—	—	—	●
Ventilated front seats	—	—	—	—	●
8-way power adjustable driver's seat	—	○	●	—	—
10-way power adjustable driver's seat w/seat extension	—	—	—	●	●
Driver's power lumbar support	—	○	●	●	●
Memory driver's seat and mirror position	—	—	—	●	●

## RESTRAINT & SAFETY SYSTEMS<sup>17</sup>

Dual front advanced airbags	●	●	●	●	●
Dual front seat-mounted side airbags	●	●	●	●	●
Side curtain airbags (1st and 2nd rows)	●	●	●	●	●
Rollover sensor	●	●	●	●	●
Front active headrests	●	●	●	●	●
Front & rear 3-point seat belts	●	●	●	●	●
Front seat-belt pretensioners	●	●	●	●	●
Height-adjustable front seat-belt anchors	●	●	●	●	●

Heated outside mirrors	●	●	●	●	●
Windshield wiper w/deicer (w/AWD only)	—	—	○	○	○
Clear lens projection headlights	—	—	—	—	○
HID headlights w/Auto-Leveling	—	—	—	—	○
Front fog lights	—	—	—	—	—
Front LED fog lights	—	—	—	—	●
Rear LED combination taillights	—	—	—	●	●
Illuminated door-handle pockets	—	—	○	●	●
Roof rails — low-profile w/silver finish	—	●	●	—	—
Roof rails — low-profile w/chrome finish	—	—	○	●	●
Front & rear stainless-steel accent plates	—	—	—	●	●
Acoustic glass — front windshield	—	●	●	●	●
Acoustic glass — front side windows	—	—	●	●	●
Privacy glass — rear windows & liftgate glass	●	●	●	●	●

Steering-wheel-mounted <sup>5</sup> audio & Bluetooth® wireless technology <sup>3</sup>	●	●	●	●	●
Drive Mode Select	●	●	●	●	●
Electronic parking brake	—	—	—	—	○
Air conditioning	●	●	—	—	—
Dual-zone automatic temperature control w/auto defog system & cluster ionizer	—	—	●	●	●
3rd-row rear air-conditioning control (3rd-row seats only)	—	○	●	●	●
Smart-Power Liftgate w/sensor	—	—	○	●	●
Supervision meter cluster w/7" TFT color LCD	—	—	○	●	●
Integrated 2nd-row sunshades	—	—	○	●	●
Power windows w/driver's one-touch auto up & down	●	●	●	●	●
Power door locks w/remote keyless entry	●	●	●	●	●
Tilt & telescopic steering column	●	●	●	●	●
110-volt power inverter	—	—	○	●	●
Tire-Pressure Monitoring System (TPMS) <sup>23</sup>	●	●	●	●	●

8-way power front passenger seat	—	—	●	●	●
40/20/40 split-folding 2nd-row seats	●	●	●	●	●
50/50 split-folding 3rd-row seats & sliding 2nd-row seats (standard on V6 models only, optional on 2.4L LX)	—	●	●	●	●
Under rear-cargo floor storage compartments (models w/o 3rd-row seat)	●	●	●	—	●
Leather-wrapped steering wheel & gearshift knob	—	○	●	●	●
Heated steering wheel	—	—	—	—	●
Wood grain interior trim	—	○	●	—	—
Black high-gloss interior trim	—	—	—	●	●
Stainless-steel sill plate & illuminated scuff trim	—	—	—	●	●

Anti-lock Braking System (ABS)	●	●	●	●	●
Electronic Stability Control (ESC)	●	●	●	●	●
Traction Control System (TCS)	●	●	●	●	●
Brake Assist System (BAS)	●	●	●	●	●
Electronic Brake-force Distribution (EBD)	●	●	●	●	●
Hill-start Assist Control (HAC)	●	●	●	●	●
Side-impact door beams	●	●	●	●	●
Lower Anchors and Tethers for Children (LATCH)	●	●	●	●	●

# SPECIFICATIONS

## ENGINE

	2.4L I4	2.0L Turbo	3.3L V6
Type	Inline 4-cylinder, aluminum block & head		
Valve gear	DOHC, four valves/cylinder, Continuously Variable Valve Timing (CVT)	DOHC, four valves/cylinder, Continuously Variable Valve Timing (CVT)	DOHC, four valves/cylinder, Continuously Variable Valve Timing (CVT)
Displacement	2,359 cc	1,998 cc	3,342 cc
Horsepower (SAE net)	185 hp @ 6,000 rpm	240 hp @ 6,000 rpm	290 hp @ 6,400 rpm
Torque (SAE net)	178 lb.-ft. @ 4,000 rpm	260 lb.-ft. @ 1,450–3,500 rpm	252 lb.-ft. @ 5,300 rpm
Fuel system	Gasoline Direct Injection (GDI)	Gasoline Direct Injection (GDI)	Gasoline Direct Injection (GDI)
Transmission	Electronically controlled 6-speed automatic, overdrive w/Sportmatic®	Electronically controlled 6-speed automatic, overdrive w/Sportmatic®	Electronically controlled 6-speed automatic, overdrive w/Sportmatic®
AWD (optional)	Full-time w/locking center differential	Full-time w/locking center differential	Full-time w/locking center differential

## DIMENSIONS

	L, LX, & EX	SX & LIMITED
Wheelbase	109.4 in.	109.4 in.
Track (front/rear)	64.3 in./64.7 in. (17") 64.1 in./64.5 in. (18")	64.1 in./64.5 in. (19")
Length	187.4 in.	187.4 in.
Width	74.4 in.	74.4 in.
Height	66.5 in. (w/roof rails)	66.5 in. (w/roof rails)
Ground clearance	7.3 in.	7.3 in.
Approach/departure angle	16.9/21.0 degrees	16.9/21.0 degrees
Headroom	(1st row) (2nd row/3rd row) 39.5 in. 39.3 in./36.3 in.	39.5 in. 39.3 in./36.3 in.
Shoulder room	(1st row) (2nd row/3rd row) 59.1 in. 58.0 in./52.8 in.	59.1 in. 58.0 in./52.8 in.
Legroom	(1st row) (2nd row/3rd row) 44.1 in. 39.4 in./31.7 in.	44.1 in. 39.4 in./31.7 in.
Interior volume	(5 seat/7 seat) 146.4 cu. ft./154.2 cu. ft.	146.4 cu. ft./154.2 cu. ft.
Cargo volume (5 seat/7 seat)	(behind 3rd row) (behind 2nd row) (behind 1st row) — /11.3 cu. ft. 38.8 cu. ft./38.0 cu. ft. 73.5 cu. ft./73.0 cu. ft.	— /11.3 cu. ft. 38.8 cu. ft./38.0 cu. ft. 73.5 cu. ft./73.0 cu. ft.

## ENDNOTES

1. These systems are not substitutes for proper and safe driving, backing-up or parking procedures; therefore, always drive safely and use caution. These systems may not detect every object behind the vehicle, in a driver's blind spot, surrounding areas of the vehicle, or direction of travel. Images shown for illustration only. 2. The Kia 10-year/100,000-mile warranty program includes various warranties and roadside assistance. Warranties include powertrain and the New Vehicle Limited Warranty (Basic). All warranties and roadside assistance are limited. See retailer for details or go to [kia.com](#). 3. The Bluetooth® word mark and logos are registered trademarks owned by Bluetooth SIG, Inc. and any use of such marks by Kia is under license. Other trademarks and trade names are those of their respective owners. A compatible Bluetooth®-enabled cell phone is required to use Bluetooth® wireless technology. 4. Infinity® is a registered trademark of Harman International Industries, Inc. 5. Warning: Driving while distracted is dangerous and should be avoided. It can result in a loss of vehicle control that may lead to an accident, severe personal injury, and death. Drivers should remain attentive to driving and always exercise caution when using the steering-wheel-mounted controls while driving. The driver's primary responsibility is in the safe and legal operation of a vehicle, and use of any handheld devices, other equipment, or vehicle systems which take the driver's eyes, attention, and focus away from the safe operation of a vehicle or which are not permissible by law should never be used during operation of the vehicle. Actual product may vary in appearance from photographs. See retailer for details. No subscription fee for UVO eServices. No charge for the UVO eServices app but requires downloading. App uses your smartphone cellular-data service. Normal cellular service rates will apply. Internet hotspot connection can be made to your personal wireless Internet at home or to a smartphone device with Internet service plan (normal cellular service rates may apply). 6. SiriusXM® audio and data services each require a subscription sold separately, or as a package, by Sirius XM Radio Inc. If you decide to continue service after your trial, the subscription plan you choose will automatically renew thereafter and you will be charged according to your chosen payment method at then-current rates. Fees and taxes apply. To cancel, you must call SiriusXM at 1-866-635-2349. See SiriusXM Customer Agreement for complete terms at [www.siriusxm.com](#). All fees and programming subject to change. Traffic information not available in all markets. See [siriusxm.com/traffic](#) for details. Sirius, XM, and all related marks and logos are trademarks of Sirius XM Radio Inc. Some channels not available in all lineups. 7. Apple iPhone® and select Android™ devices only are UVO eServices compatible. iPhone® is a registered trademark of Apple Inc. Android™ is a trademark of Google Inc. 8. Google, Google Play, and Google Maps are trademarks of Google Inc. Google Maps ©2015 Google. 9. Feature activates

## CAPACITIES

	2.4L I4		2.0L Turbo		3.3L V6	
	FWD	AWD	FWD	AWD	FWD	AWD
Towing capacity (see Owner's Manual) <sup>16</sup>	2,000 lb.	2,000 lb.	3,500 lb.	3,500 lb.	3,500 lb.	5,000 lb.

## BODY & CHASSIS

	2.4L I4, 2.0L Turbo, & 3.3L V6
Body type	Steel unibody with ISO-structure™
Front suspension	Independent, MacPherson struts, coil springs, stabilizer bar, Dual-Flow Damper (DFD) shocks
Rear suspension	Independent, multi-link, stabilizer bar, Dual-Flow Damper (DFD) shocks
Steering type	Motor-driven power-steering
Turning diameter, curb-to-curb	36.2 ft. (FWD)/36.4 ft. (AWD)

## CURB WEIGHT

	2.4L I4		2.0L Turbo		3.3L V6	
	FWD	AWD	FWD	AWD	FWD	AWD
Minimum Maximum	3,704 lb. 3,832 lb.	3,840 lb. 3,968 lb.	3,878 lb. 4,178 lb.	4,004 lb. 4,303 lb.	3,968 lb. 4,211 lb.	4,101 lb. 4,343 lb.

## TIRES & BRAKES

	2.4L I4, 2.0L Turbo, & 3.3L V6
Tire size	235/65R17 (L, LX), 235/60R18 (EX) 235/55R19 (Limited, SX)
Brake type	Power-assisted ABS + Electronic Stability Control
Front/rear	12.6-in. ventilated discs/12.1-in. solid discs

## 2016 EPA-ESTIMATED FUEL ECONOMY<sup>24</sup>

	2.4L I4		2.0L Turbo		3.3L V6		
Estimated City/Highway MPG	FWD	AWD	FWD	AWD	FWD	AWD (LX, EX)	AWD (SX, SXL)
Automatic transmission	21/29	21/26	20/27	19/25	18/26	18/26	17/23
Fuel tank capacity (gallons)	18.8	18.8	18.8	18.8	18.8	18.8	18.8

after an airbag deployment. Feature requires a mobile phone connected via Bluetooth® wireless technology. Dependent on cellular-service coverage. 10. 24-hour Roadside Assistance is a service plan provided by Kia Motors America, Inc. Certain limitations apply. Coverage details are available in the Kia Warranty and Consumer Information Manual. To use the Enhanced Roadside Assist feature, a mobile phone connected via Bluetooth® wireless technology within the cellular-service coverage area is required. 11. Vehicle Diagnostics feature does not take the place of regularly scheduled maintenance. Feature checks powertrain, chassis, and airbag systems only. For factory recommended maintenance schedule, see the Maintenance Feature of UVO eServices or the Owner's Manual. 12. Apple, the Apple logo, Siri, and iPhone are trademarks of Apple Inc., registered in the US and other countries. App Store is a service mark of Apple Inc. Siri-compatible with iOS 6 and above only. 13. All cargo should be evenly distributed and properly secured, and never piled higher than the seatbacks. Images shown for illustration purposes only. 14. Reclining seat can reduce the effectiveness of the safety restraint system and may lead to additional injury in an accident. 15. YES Essentials® is a registered trademark of Sage Automotive Interiors. 16. Towing requires additional equipment. See Owner's Manual for towing capacity, and additional information and warnings. 17. For maximum protection, always wear your seat belt. No system, no matter how advanced, can compensate for all driver errors, driving conditions, and/or injury. 18. Interbrand's Best Global Brands 2014 report is a look at financial performance of the brand, role of brand in the purchase decision process, and the brand strength. Go to [www.bestglobalbrands.com](#) for more information. 19. 2014 Kelley Blue Book Brand Image Awards are based on the Brand Watch™ study from Kelley Blue Book Market Intelligence. Award calculated among non-luxury shoppers. For more information, visit [www.kbb.com](#). Kelley Blue Book is a registered trademark of Kelley Blue Book Co., Inc. For EPA-estimated MPG information, see retailer or go to [kia.com](#). 20. NBA identifications are the intellectual property of NBA Properties, Inc. ©2015 NBA Properties, Inc. All rights reserved. 21. All materials and intellectual property related to the LPGa are owned by the LPGa, and any unauthorized use is strictly prohibited without the LPGa's expressed prior written consent. 22. HD Radio™ and the HD Radio logo are proprietary trademarks of iBiquity Digital Corporation. 23. Even with the Tire-Pressure Monitoring System, always check your tire pressure on a regular basis. 24. Based on EPA estimates. Actual mileage will vary with options, driving conditions, driving habits, and your vehicle's condition.

● STANDARD ○ OPTIONAL — NOT AVAILABLE

^FEATURES HAVE LATE AVAILABILITY, VISIT KIA.COM FOR MORE INFORMATION.