



Sorento

Features & Functions Guide

www.kia.com

Consumer / Roadside Assistance:
1-800-333-4KIA (4542)

SIRIUS Customer Care:
1-888-539-SIRIUS (7474)

See Back Cover for Vehicle
Maintenance Schedule



Getting to know your | Sorento



Congratulations on Your New Kia Purchase!

Your new Kia vehicle has been designed, engineered and manufactured to provide you with years of comfortable, safe and dependable driving. Kia is committed to quality, innovation, safety and – above all – your satisfaction.

Using This Guide

The information contained in this guide will help you become familiar with the operation and features of your new Kia vehicle. The flipbook format facilitates information access, while the detailed illustrations ensure the instructions are easy to follow.

⚠ This *Features & Functions Guide* provides an overview of vehicle operation and equipment. It is not meant as a substitute for your Owner's Manual. Your Owner's Manual contains specific information about the operation and maintenance of your Kia vehicle, including safety information, cautions and warnings that you need to know. In the interest of your safety and that of your family, and to help you avoid risks that may result in death or serious injury, Kia reminds you to carefully read your Owner's Manual in order to fully familiarize yourself with the important information it contains.

While the information contained in this guide is accurate at the time of printing, Kia may change vehicle specifications without notice in advance or after the fact, and assumes no liability in connection with such changes.

FEATURES & FUNCTIONS GUIDE

QUICK GUIDE

• Windshield and Rear Window Wipers & Washers	Page 07
• Digital Clock	Page 11
• Climate Controls	Page 12
• Fuel Cap and “Check Engine” Light	Page 18
• Occupant Classification System (OCS) and Passenger Air Bag OFF Indicator	Page 22

CONTENTS

Instrument Cluster _____ 02

• Tire Pressure Monitoring System (TPMS) _____	02
• Warning Lights _____	03

Panel / Stalk / Steering Wheel Controls _____ 04

• Instrument Panel Dimmer _____	04
• Electronic Stability Control (ESC) _____	04
• 4WD Transfer Knob* _____	05
• Headlights _____	06
• High Beams _____	06
• Fog Lights* _____	06
• Turn Signals _____	06
• Windshield Wipers & Washers _____	07
• Rear Wiper & Washer _____	07
• Steering Wheel Audio Controls* _____	08
• Cruise Control* _____	08

Center Panel Controls _____ 09

• Audio Systems* _____	09
• Digital Clock _____	11
• Automatic Gear Shift _____	11
• Manual Climate Control* _____	12
• Automatic Climate Control* _____	13
• Air Vents _____	14

Seating _____ 15

• 8-Way Power Adjustable Driver's Seat* _____	15
• 6-Way Manual Adjustable Driver's Seat* _____	16
• Driver's Seat Lumbar Support _____	17
• Front Active Headrests _____	17

Driver's Controls _____ 18

Exterior

• Remote Keyless Entry _____	18
• Double-Turn Lock/Unlock All* _____	18
• Fuel Cap / “Check Engine” Light _____	18

Interior

• Power Windows and Lock _____	19
• Central Door Lock _____	19
• Power/Heated Outside Mirrors* _____	19

Roof Panel Controls _____ 20

• Map Lights _____	20
• Center Dome Light _____	20
• Rear Dome Light _____	20
• Multi-Meter* _____	21

Safety _____ 22

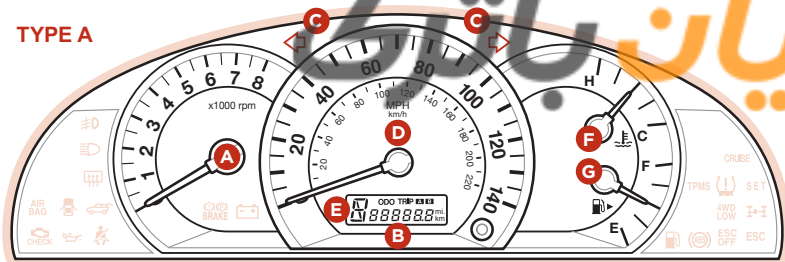
• Occupant Classification System (OCS) / Passenger Air Bag OFF Indicator _____	22
• Child Safety Locks _____	22
• Safety Belts _____	23

Maintenance _____ (see back cover)

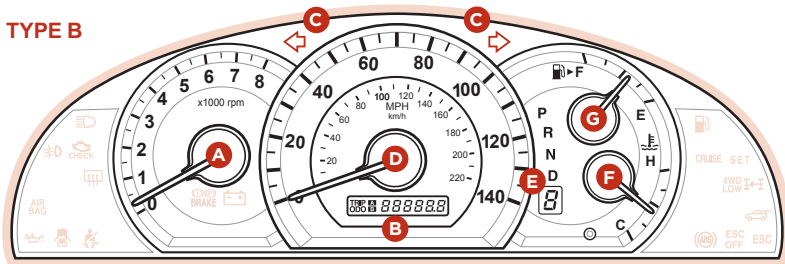
*If equipped

Always check the Owner's Manual for complete operating information and safety warnings.

TYPE A



TYPE B



- | | |
|---------------------------------|----------------------------------|
| A Tachometer | E Shift Pattern Indicator |
| B Odometer/Tripmeter | F Engine Temperature |
| C Turn Signal Indicators | G Fuel Gauge |
| D Speedometer | |

TIRE PRESSURE MONITORING SYSTEM (TPMS)



TPMS Malfunction Indicator **TPMS** remains illuminated when there is a problem with the system. See your dealer for service.

Low Tire Pressure Indicator (⚠) illuminates when one or more tires is under-inflated.

- Inflate tire(s) to specifications to turn off Low Tire Pressure Indicator. This specification can be found on a label attached to the front driver's door sill.

NOTE: Consult your dealer for service if Low Tire Pressure Indicator remains illuminated after inflating your tire(s).

NOTE: For proper maintenance, safety and maximum fuel economy, you must always maintain recommended tire inflation pressures and stay within the load limits and weight distribution recommended for your vehicle.

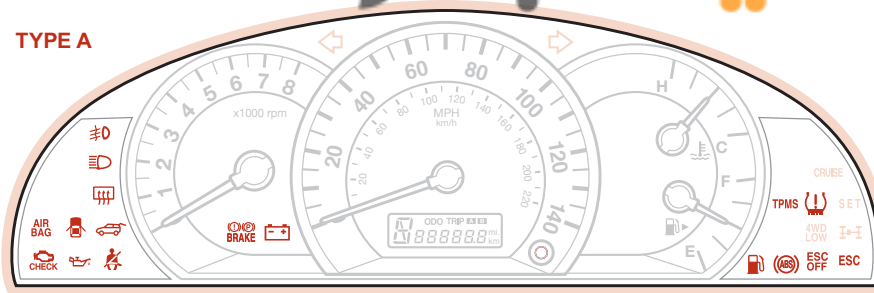
Always check the Owner's Manual for complete operating information and safety warnings.

INSTRUMENT CLUSTER

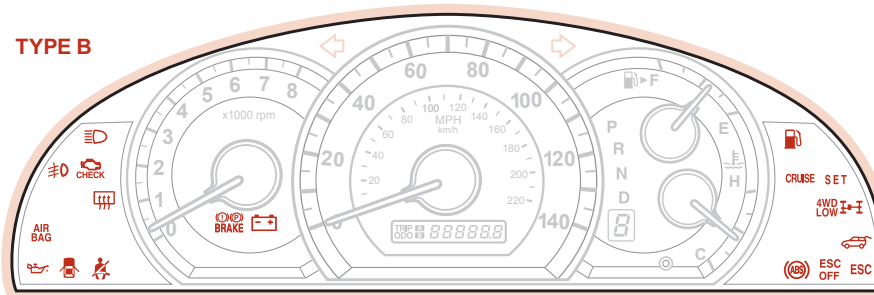
WARNING LIGHTS

For more information on the function of all warning lights, please refer to the Owner's Manual.

TYPE A



TYPE B



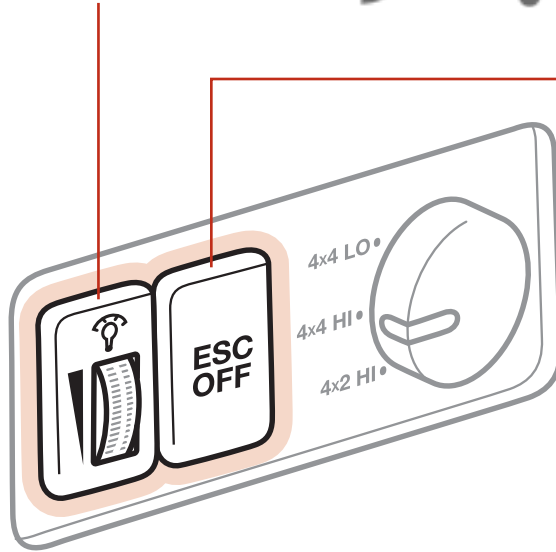
- Fog Lights*
- High Beam Indicator
- Rear Window Defroster Indicator
- Air Bag Warning*
- Door Ajar
- Rear Hatch Open*
- "Check Engine" Light
- Oil Pressure Warning
- Safety Belt Warning
- Parking Brake / Brake Fluid Warning
- Charging System Warning
- Cruise Control*
- Tire Pressure Monitoring System (TPMS) Malfunction Indicator
- Low Tire Pressure Indicator
- Cruise Control Set
- 4WD LOW*
- 4WD Warning System*
- Electronic Stability Control (ESC) Indicator*
- ESC Off*
- ABS Warning*
- Low Fuel Indicator

*If equipped

Always check the Owner's Manual for complete operating information and safety warnings.

INSTRUMENT PANEL DIMMER

With parking lights/headlights on, rotate knob to adjust display brightness.



ELECTRONIC STABILITY CONTROL (ESC)

If an unstable condition occurs, ESC intervenes within fractions of a second via the engine computer and brake system.

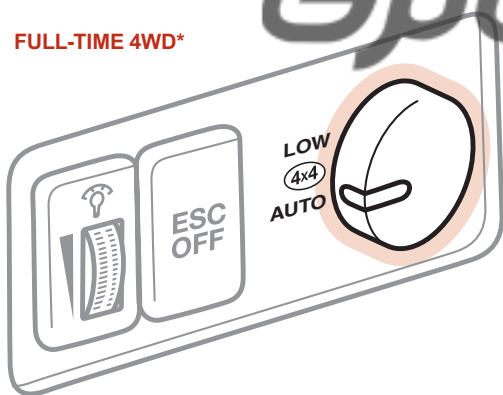
To turn ESC OFF/ON:

- Press ESC button

NOTE: System defaults to ON at vehicle start-up.

4WD TRANSFER SHIFT KNOB*

FULL-TIME 4WD*

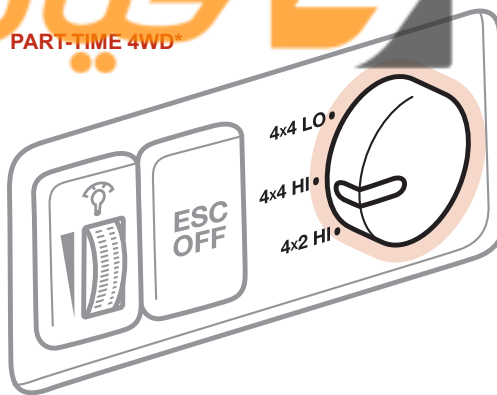


Full-Time 4-Wheel-Drive*:

AUTO: Normal on-road driving

LOW: Off-road driving or inclement weather

PART-TIME 4WD*



Part-Time 4-Wheel-Drive*:

4x2 HI (Rear-wheel Drive): Normal on-road driving

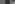

4x4 HI (High-range 4WD): Off-road driving or snowy/wet conditions at normal speed

4X4 LO (Low-range 4WD): Ascending or descending hills, off-road driving, or low-speed towing

**If equipped*

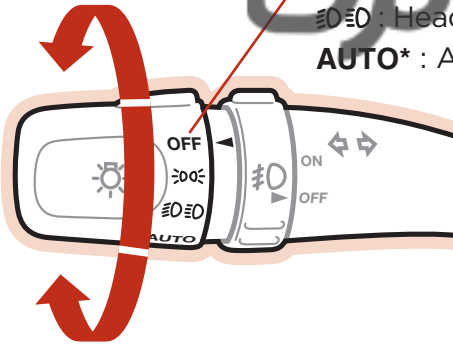
Always check the Owner's Manual for complete operating information and safety warnings.

HEADLIGHTS

 : Parking Lights
 : Headlights
AUTO* : Auto Function

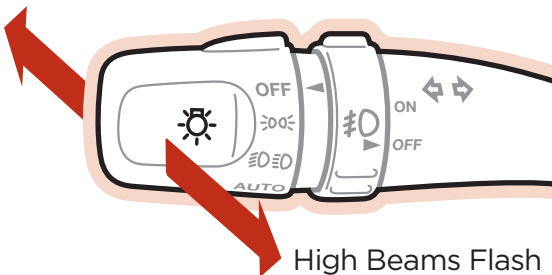
≡0≡0 : Headlights

AUTO* : Auto Function



HIGH BEAMS

High Beams ON

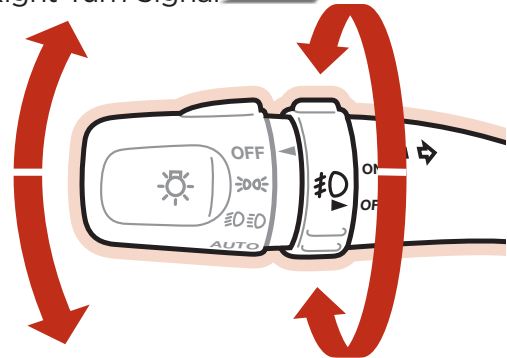


**If equipped*

FOG LIGHTS* & TURN SIGNALS

Right Turn Signal

Fog Lights ON

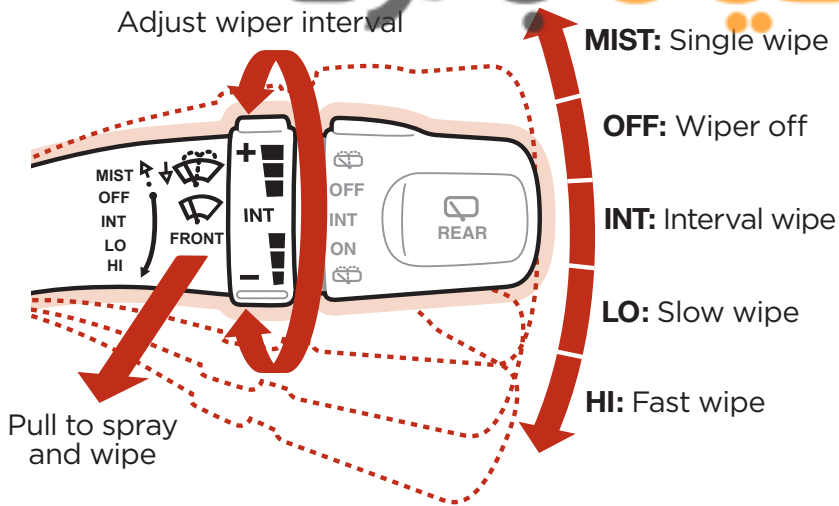


Left Turn Signal

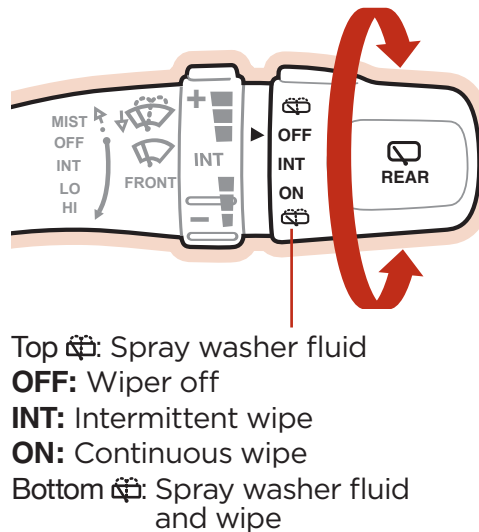
Fog Lights OFF

NOTE: Headlights must be ON for Fog Light operation.

WINDSHIELD WIPERS & WASHERS

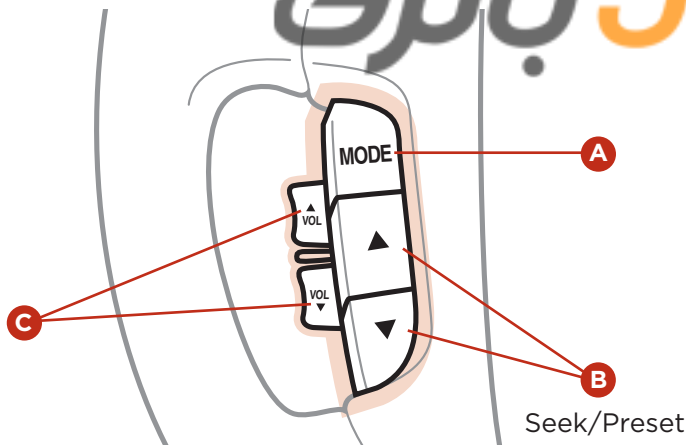


REAR WIPER & WASHER



Always check the Owner's Manual for complete operating information and safety warnings.

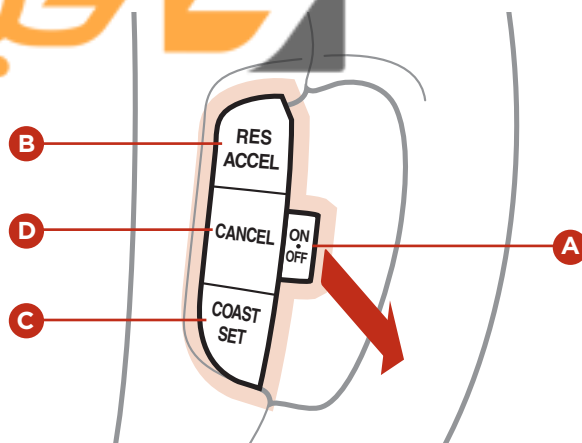
STEERING WHEEL AUDIO CONTROLS*



- A** Press to toggle Audio Modes
Press and hold to turn Audio System ON/OFF
- B Radio Mode:**
Press to advance through Preset Stations
Press and hold to Auto Seek
- CD / CD Changer* Mode:**
Press for Next/Previous Track
Press and hold for FF/REW or Next/Previous Disc
- C** Adjust Volume

*If equipped

CRUISE CONTROL*



- A** Pull toward driver to turn system ON/OFF
- B** Resume or increase Cruising Speed
- C** Set or decrease Cruising Speed
- D** Cancel Cruise Control

To cancel Cruise Control, do one of the following:

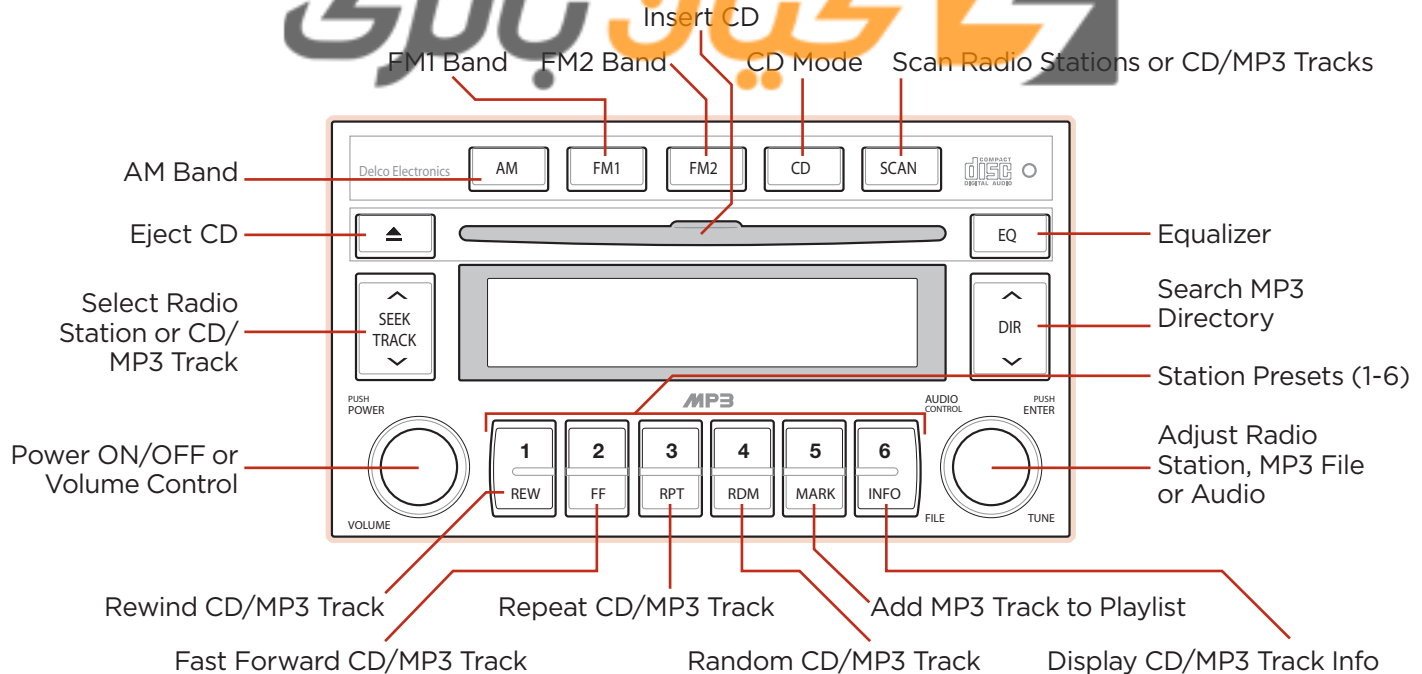
- Press the brake pedal
- Press the CANCEL button **D**

To turn Cruise Control OFF:

- Pull the CRUISE ON/OFF lever **A**

CENTER PANEL CONTROLS

AM/FM/CD/MP3 AUDIO SYSTEM*



NOTE: For further audio system operations, refer to page 10.

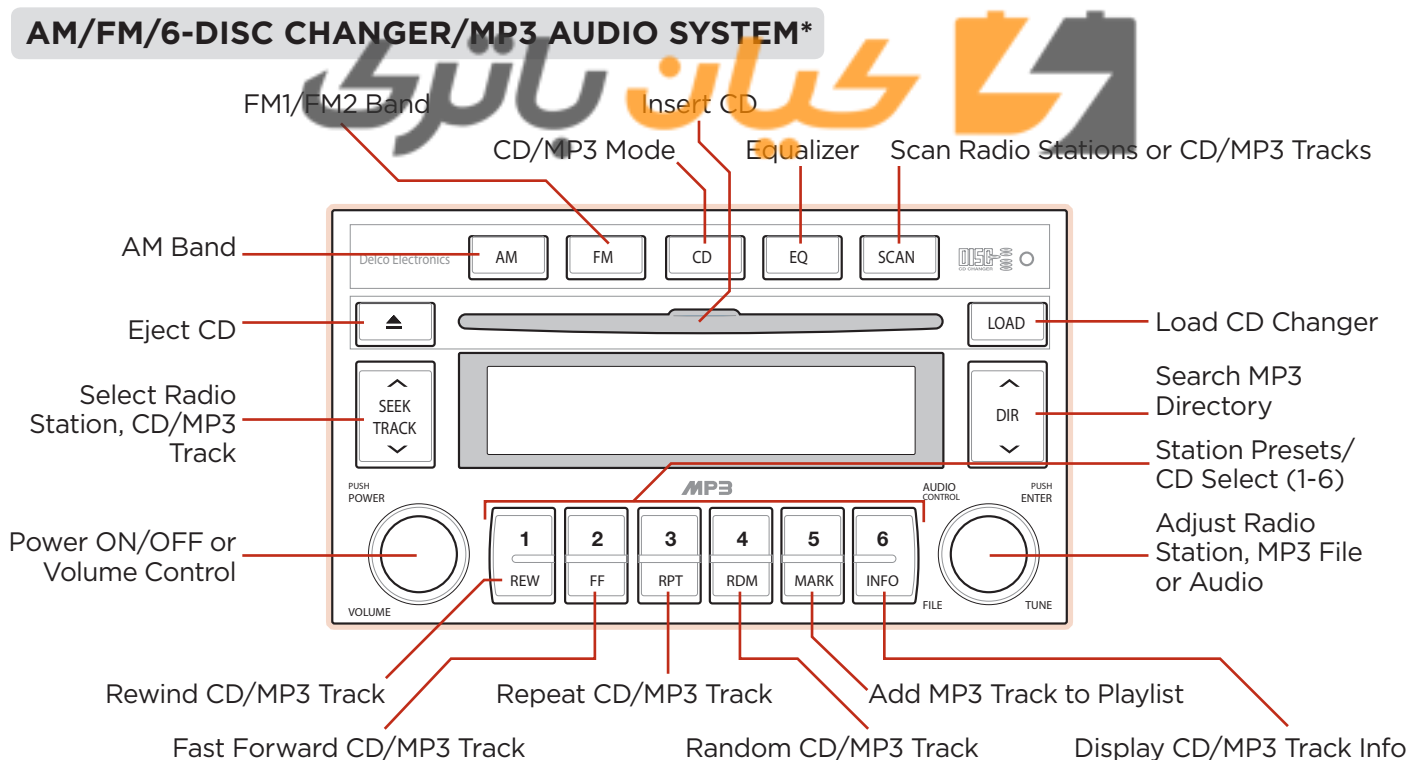
NOTE: Forcing a CD into the slot may damage the player.

**If equipped*

Always check the Owner's Manual for complete operating information and safety warnings.

CENTER PANEL CONTROLS

AM/FM/6-DISC CHANGER/MP3 AUDIO SYSTEM*



NOTE: For further audio system operations, refer to page 9.

NOTE: Forcing a CD into the slot may damage the player.

**If equipped*

CENTER PANEL CONTROLS

DIGITAL CLOCK



AUTOMATIC GEAR SHIFT



- P:** Park
- R:** Reverse
- N:** Neutral
- D:** Drive
- [+]:** Sport Mode Upshift
- [-]:** Sport Mode Downshift

Sport Mode: Move shift lever from D to right gate

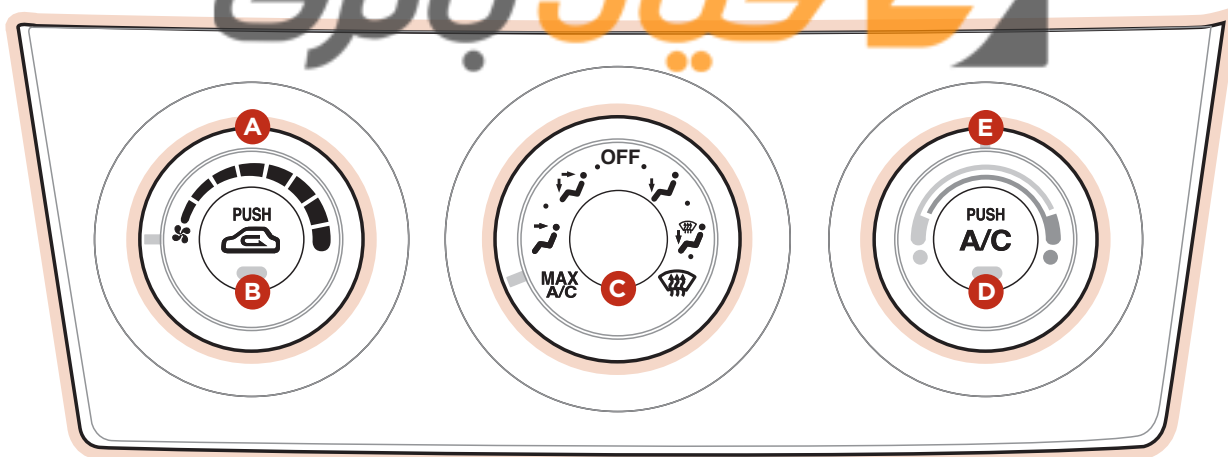
Sport Mode Shifting: Move shift lever up (+) to Upshift or down (-) to Downshift

NOTE: Press brake pedal to move gearshift from P to any gear.

Always check the Owner's Manual for complete operating information and safety warnings.

CENTER PANEL CONTROLS

MANUAL CLIMATE CONTROL*



A Fan Speed

B Recirculated Air

C Mode Selection

D Air Conditioning

E Temperature Adjustment

Max Defrost:

1. Select **Defrost** or **Floor/Defrost** Mode **C**
2. Select **High Fan Speed** for quick Defrost **A**
3. Select desired **Temperature** **E**

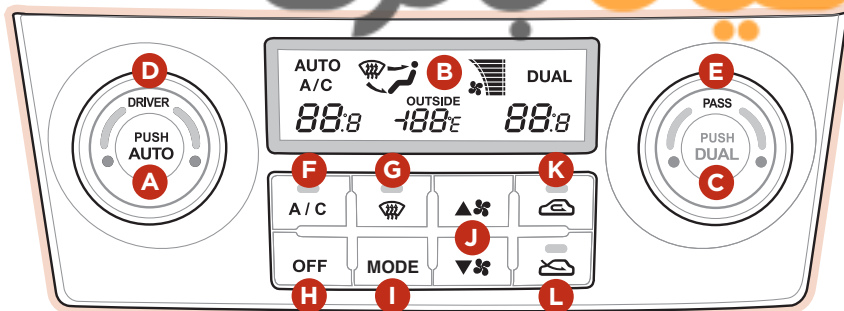
NOTE: Defrost Mode activates A/C and opens Fresh Air Vent.

NOTE: MAX A/C Mode automatically engages Recirculated Air.

**If equipped*

CENTER PANEL CONTROLS

AUTOMATIC CLIMATE CONTROL*



- | | |
|---|-------------------------------|
| A Auto Climate Control | G Windshield Defroster |
| B Climate Control Display | H System Off |
| C Dual Temperature Control Selection | I Mode Selection |
| D Driver's Temperature Control | J Fan Speed |
| E Passenger's Temperature Control | K Recirculated Air |
| F Air Conditioning | L Fresh Air |

NOTE: Defrost Mode  activates A/C and opens Fresh Air Vent.

NOTE: Keep inside glass as clean as possible to reduce window fogging.

Climate Control Auto Function:

- Press **A** AUTO to select Full Auto Operation

NOTE: During Auto Operation, fan speed, air intake, air flow and air conditioning may be engaged at any time to reach desired temperature and reduce humidity.

Max Defrost:

1. Select **Defrost**  Mode **G**
2. Select **Max Fan Speed** **J**
3. Set **Temperature** to **Hot** **D**

Defogging:

1. Select **Defrost**  Mode **G**
2. Select **Max Fan Speed** **J**
3. Select desired **Temperature** **D**

*If equipped

Always check the Owner's Manual for complete operating information and safety warnings.

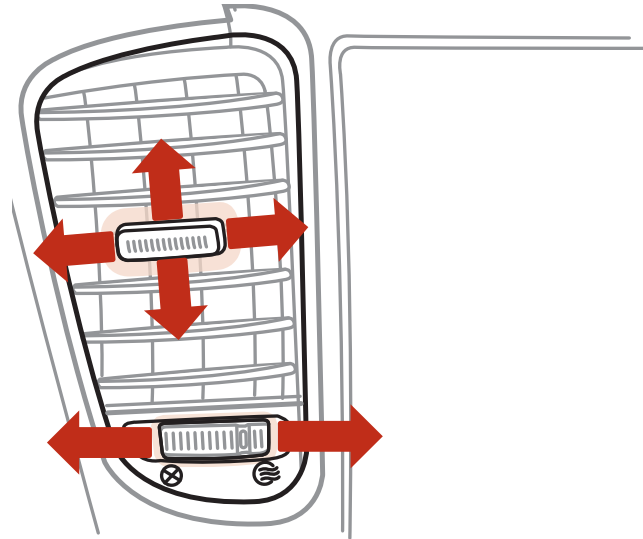
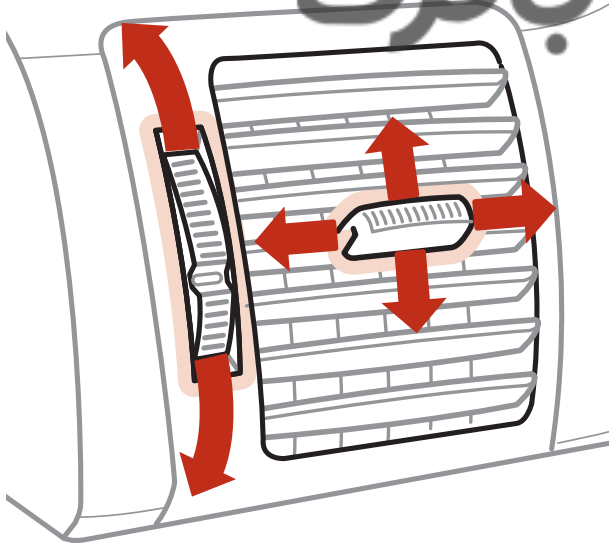
CENTER PANEL CONTROLS

AIR VENTS

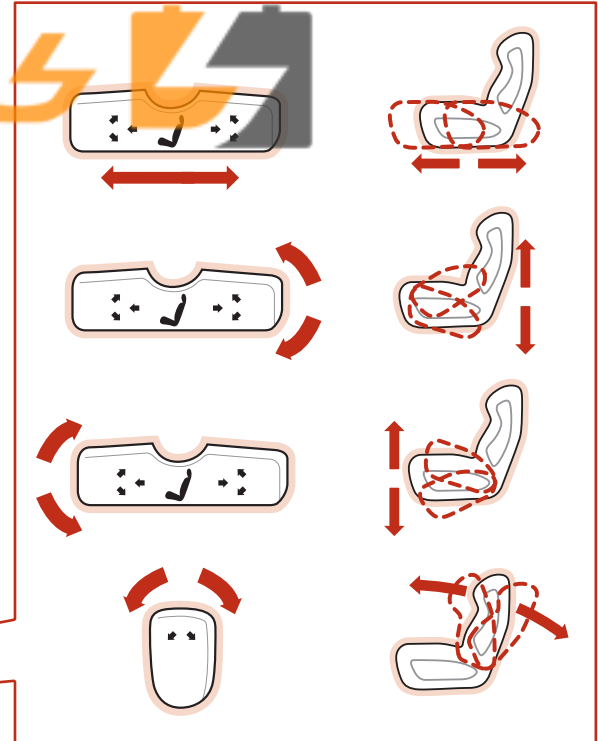
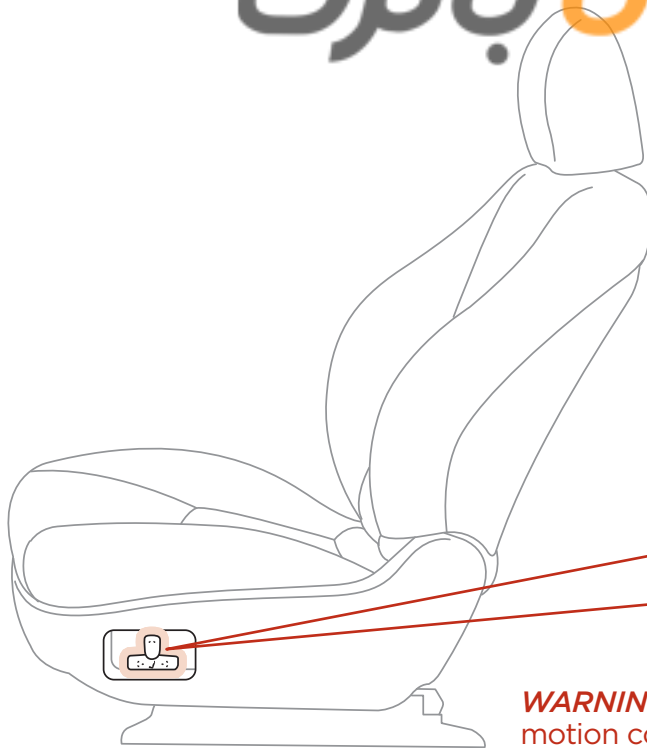
باتری

To operate air vents:

- 1 Turn wheel up/down or right/left to open or close the vent
- 2 Use tab to change direction of air flow



8-WAY POWER ADJUSTABLE DRIVER'S SEAT*



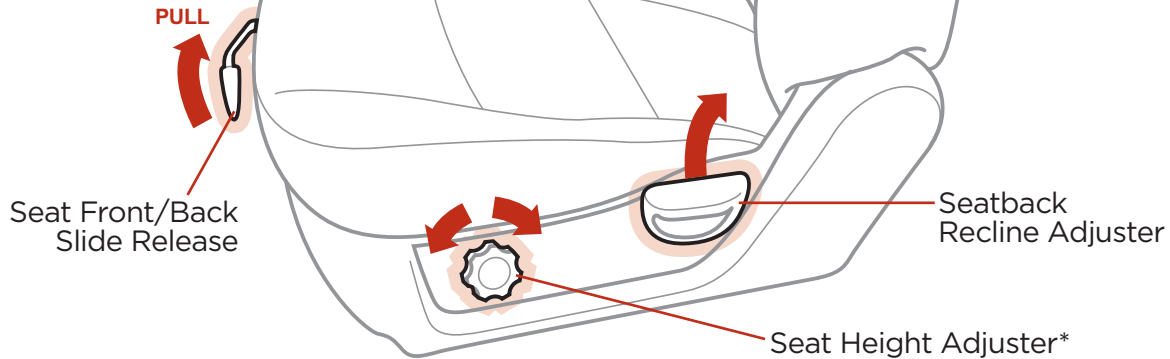
WARNING: Adjusting the driver's seat with the vehicle in motion could cause loss of control and a serious accident.

**If equipped*

Always check the Owner's Manual for complete operating information and safety warnings.

6-WAY MANUAL ADJUSTABLE DRIVER'S SEAT*

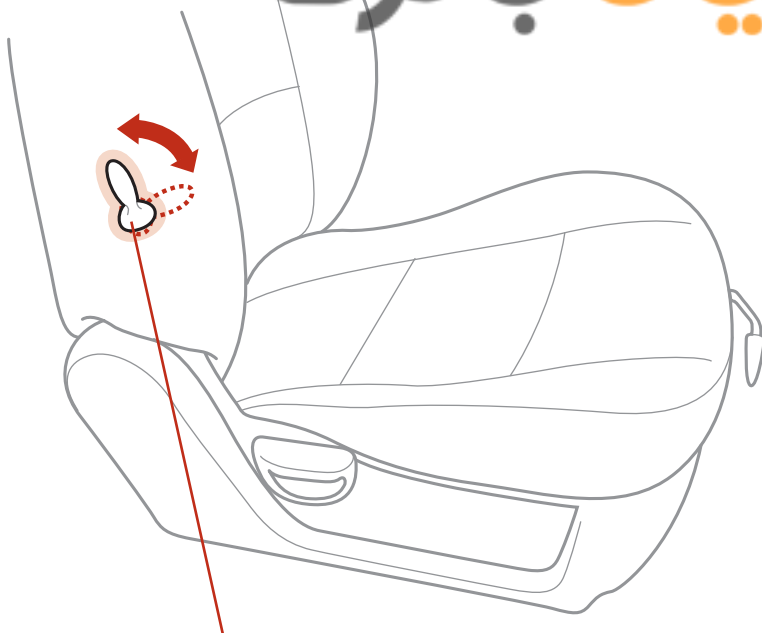
کیان باتری



WARNING: Adjusting the driver's seat with the vehicle in motion could cause loss of control and a serious accident.

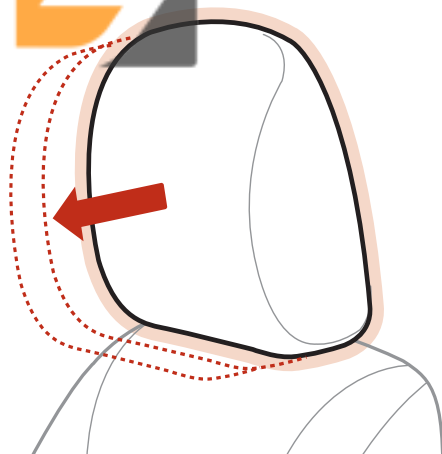
**If equipped*

DRIVER'S SEAT LUMBAR SUPPORT



Lumbar Support Adjuster

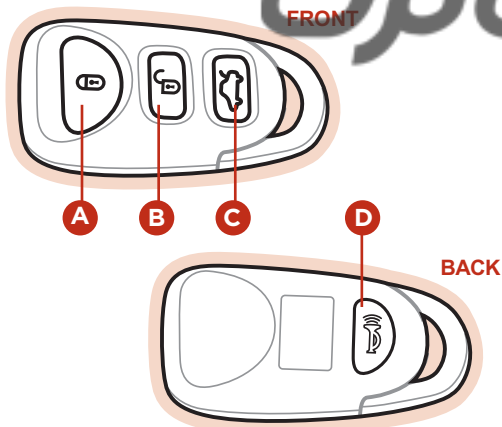
FRONT ACTIVE HEADRESTS



Move forward automatically in the event of a rear impact to help protect the driver's and front passenger's heads from moving backward, thus helping to prevent neck injuries.

Always check the Owner's Manual for complete operating information and safety warnings.

REMOTE KEYLESS ENTRY



- A** Lock All Doors.
- B** Unlock Driver Door.
Press twice in 3 seconds to unlock All Doors.
- C** Press and hold more than 1 second to unlock Rear Hatch.
- D** Press and hold more than 1 second for Panic Alarm. To turn off Alarm, press any button.

**If equipped*

DOUBLE-TURN LOCK/UNLOCK ALL*

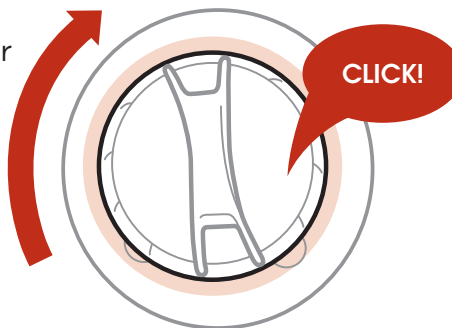
Turn clockwise once to unlock Driver Door

Turn clockwise again within 4 seconds to unlock All Doors



FUEL CAP / "CHECK ENGINE" LIGHT

Tighten for one or more **CLICKS** to prevent "Check Engine" Light from illuminating

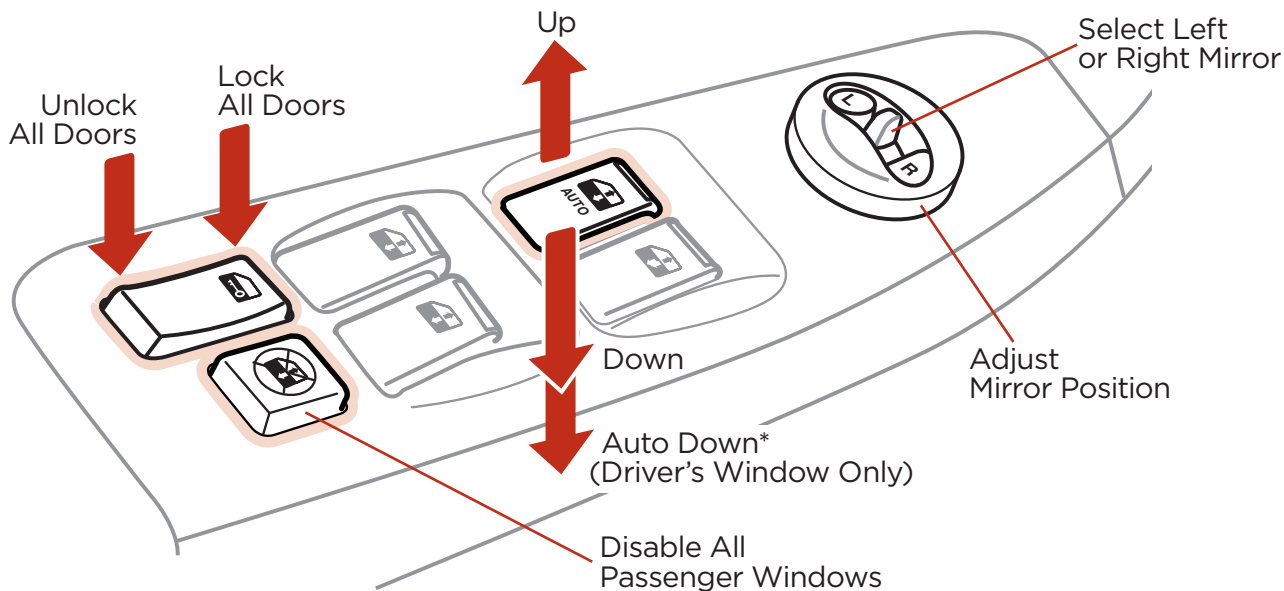


DRIVER'S CONTROLS

POWER WINDOWS, WINDOW LOCK & CENTRAL DOOR LOCK

POWER / HEATED OUTSIDE MIRRORS*

Mirror heaters ON/OFF with Rear Window Defroster



*If equipped

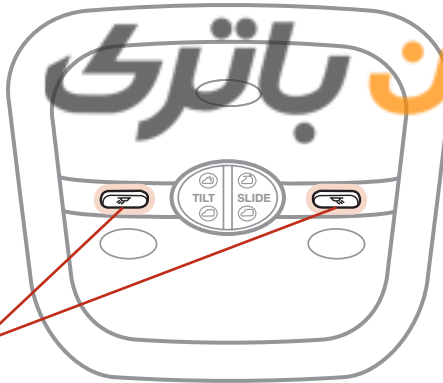
Always check the Owner's Manual for complete operating information and safety warnings.

ROOF PANEL CONTROLS

MAP LIGHTS

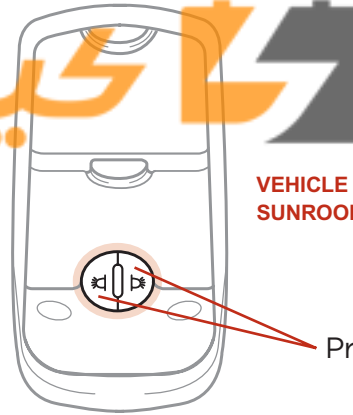
VEHICLE WITH
SUNROOF

Press ON/OFF



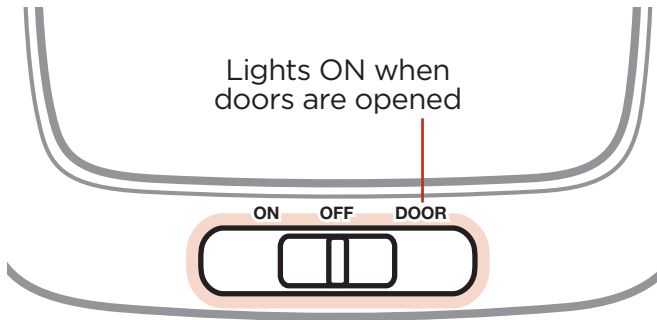
VEHICLE WITHOUT
SUNROOF

Press ON/OFF



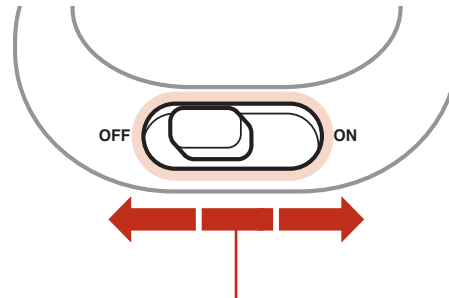
CENTER DOME LIGHT

Lights ON when
doors are opened



REAR DOME LIGHT

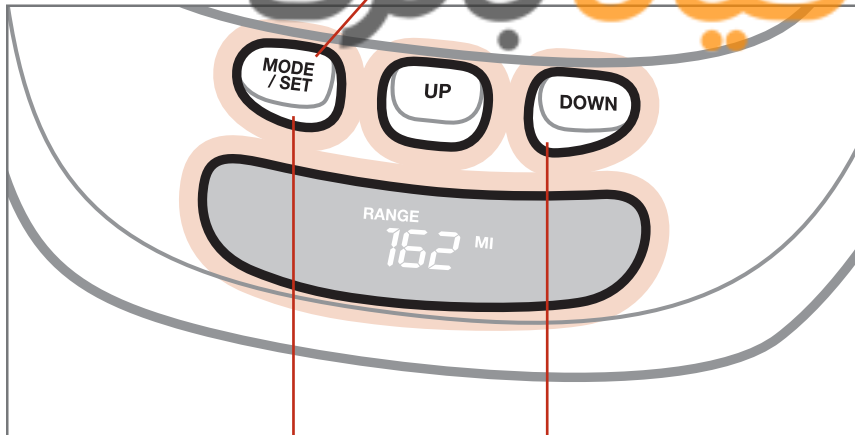
OFF ON



Light ON when rear hatch is opened

ROOF PANEL CONTROLS

MULTI-METER*



Press the MODE/SET button to toggle through each mode in the sequence:

- 1 **DIR:** Compass
- 2 **RANGE:** Distance to Empty
- 3 **AVG:** Average Speed
- 4 **ET:** Elapsed Driving Time
- 5 **Outside:** Outside Temperature

Press the MODE/SET button for more than 1.5 seconds to reset value

Press the DOWN button for more than 5 seconds to switch between U.S. and metric units

**If equipped*

Always check the Owner's Manual for complete operating information and safety warnings.

OCCUPANT CLASSIFICATION SYSTEM (OCS) / PASSENGER AIR BAG OFF INDICATOR

OCS detects the presence and position of the front passenger and adjusts or turns off air bag deployment accordingly.

Depending on the situation and the accident, the system may:

- Deploy air bag with lower force (small or out-of-position occupant)
- Deploy air bag normally (full-size occupant)
- Cancel air bag deployment (empty seat)

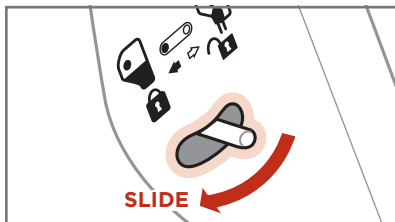
If the system determines that the air bag should not be deployed, the “**Passenger Air Bag OFF**” light will illuminate.

Please refer to your Owner's Manual and the separate brochure titled “Your Safety is Important to Kia” for more detailed information regarding your vehicle's air bags.

WARNING: Always properly restrain children in the rear seat of your vehicle. Seat covers must NOT be used because they can affect how the system operates.



CHILD SAFETY LOCKS



Located on the rear edge of the rear passenger doors, push the safety lock to the LOCK position to disable the inner door handles from opening the rear doors.

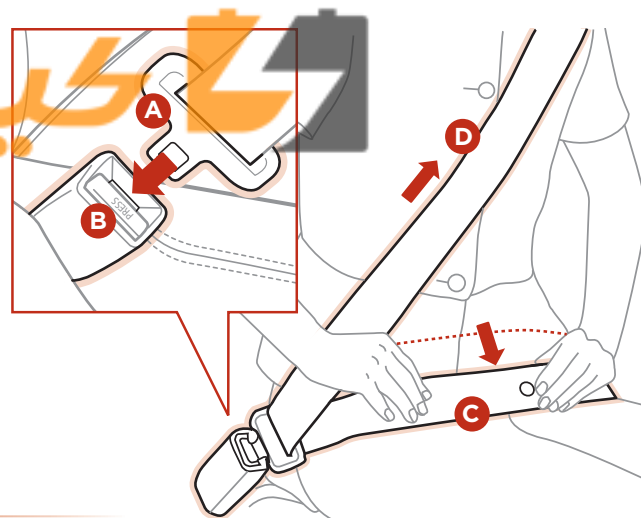
WARNING: To prevent a child from opening rear doors from the inside, rear door safety locks should be activated whenever children are in the vehicle.

SAFETY BELTS

To properly fasten your safety belts:

1. Insert the tongue belt plate **A** into the buckle **B** until it clicks.
2. Position the lap portion of the belt across your lap as **LOW ON THE HIPS** as possible **C**. Adjust the belt to a **SNUG FIT** by pulling up on the shoulder portion **D**.

NOTE: We strongly recommend that the driver and all passengers use the safety belts at all times. Proper use of the safety belts decreases the risk of severe injury or death in accidents or sudden stops.



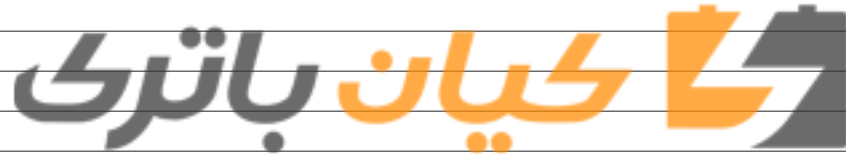
SAFETY BELT RETRACTOR INERTIAL LOCKS

- Inertial locks allow lap/shoulder safety belts to remain unlocked during normal vehicle operation, for freedom of movement and increased comfort
- During a **STRONG STOP, SUDDEN TURN OR COLLISION**, safety belt retractors will automatically lock the belts

NOTE: You may become aware of the safety belts locking while braking or going around sharp corners.

Always check the Owner's Manual for complete operating information and safety warnings.

کیان باتری





NORMAL MAINTENANCE SCHEDULE

7,500 miles	A						
15,000 miles	A	B					
22,500 miles	A		C				
30,000 miles	A	B		D			
37,500 miles	A						
45,000 miles	A	B	C				
52,500 miles	A						
60,000 miles	A	B		D	E	F	
67,500 miles	A		C				
75,000 miles	A	B					
82,500 miles	A						
90,000 miles	A	B	C	D	E		
97,500 miles	A						
100,000 miles							G
105,000 miles	A	B					

When your vehicle requires service, remember that your dealer knows your vehicle best. Your dealer has factory-trained technicians, recommended special tools, genuine Kia replacement parts, and is dedicated to your complete satisfaction. For expert advice and quality service, see your authorized Kia dealer.

A Inspect*: Transfer case fluid (4WD)**, front differential fluid**, rear differential fluid**, air cleaner element, cooling system, fuel tank and cap, fuel lines and hoses, disc brakes and pads, power steering fluid, steering linkage and hoses
Replace: Engine oil and oil filter

B Inspect*: Automatic transmission fluid, fuel tank air filter, battery condition, brake lines and connections, parking brake, brake fluid, drive shaft and boots, propeller shaft, tire tread wear
Lubricate: All locks and hinges

C Replace: Front differential fluid**, rear differential fluid**
Inspect*: Drive belts, crankcase ventilation hoses, front suspension ball joints, chassis and body nuts and bolts

D Replace: Air cleaner element, fuel tank air filter

E Replace: Engine coolant

F Inspect*: Valve clearance
Replace: Fuel filter

G Replace: Spark plugs

*and, if necessary, adjust, clean, replace or correct

**If equipped

Rotate tires every 7,500 miles or sooner if needed.

Inspect air conditioner compressor and refrigerant amount annually.

Transfer case fluid and rear differential fluid should be changed anytime they have been submerged in water.

Inspect water pump when replacing the drive belt or timing belt.

Kia Sorento Features & Functions Guide

Part Number: UA090-PS-004

© 2008 Kia Motors America, Inc.

All rights reserved.

Warranty may be voided if maintenance schedule is not followed.

Call 1-800-333-4KIA (4542) for Roadside Assistance.

See your Owner's Manual for more details and complete maintenance information, including severe maintenance schedule.



KIA MOTORS
The Power to Surprise™

SORENTO FEATURES & FUNCTIONS GUIDE SURVEY

Please take a moment to complete and submit this evaluation of the Kia Sorento Features & Functions Guide and your Delivery experience. Your feedback is an important contribution to the continuous improvement of our resources so they better meet your future consumer needs. No postage required.

Customer Name (Optional): _____ Phone (Optional): _____ (Please print)

Dealership Name: _____ State: _____ (Please print)

Sales Consultant's Name: _____ Vehicle Model Year: _____ Date: _____ (Please print)

I. Features & Functions Guide

A. Please answer the following questions from 1-5, 1 = Strongly Disagree, and 5 = Strongly Agree.

	Strongly Disagree	Disagree	Neutral	Agree	Strongly Agree
This guide was well-organized and easy to use.	1	2	3	4	5
This guide clearly explained the operation of the features and controls.	1	2	3	4	5
This guide covered features and controls that are important to me.	1	2	3	4	5

B. Please answer YES or NO to the following questions, by circling YES or NO.

Do you plan on using this guide as a quick-reference tool?	YES	NO
Did your Sales Consultant utilize this guide during your Delivery Product Presentation?	YES	NO
Did your Sales Consultant have extensive knowledge of the topics covered in this guide?	YES	NO

III. Your Feedback

In the space provided below, please provide us with your feedback on this Features & Functions Guide in your own words. Was it helpful to you? Was it effective in explaining the features and functions of your new vehicle? Are there other features or functions that you would like to have seen covered in this guide?

We appreciate your responses!

Thank you! Your feedback is important to us!

Safety

Roof Panel Controls

Driver's Controls

Seating

Center Panel Controls

Panel / Steak / Steering Wheel Controls

Instrument Cluster



NO POSTAGE
NECESSARY
IF MAILED
IN THE
UNITED STATES

BUSINESS REPLY MAIL

FIRST-CLASS MAIL PERMIT NO 13514 IRVINE CA

POSTAGE WILL BE PAID BY ADDRESSEE

**ATTN: KIA UNIVERSITY
KIA MOTORS AMERICA INC
PO BOX 52410
IRVINE CA 92619-9927**

